

# Specifications

## FOXY Advanced System

### Trapezoid / Trapez:

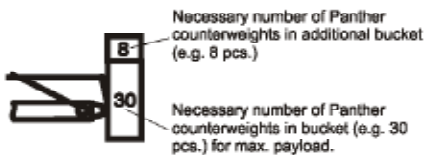
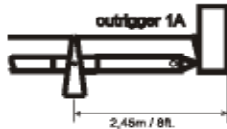
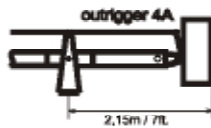
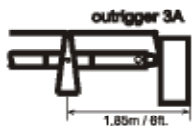
#### Standard Trapezoid (all versions)



#### optional Trapezoid compact (up to version 6)



### Rear side / Hintere Seite:



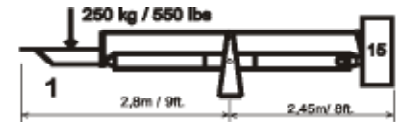
Necessary number of Panther counterweights in additional bucket (e.g. 8 pcs.)

Necessary number of Panther counterweights in bucket (e.g. 30 pcs.) for max. payload.

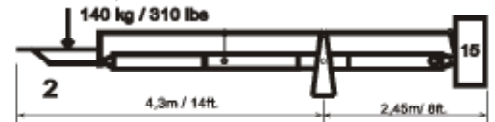
1 Panther counterweight / Gegengewicht = 17 kg (37.5lbs)

## Platform Versions

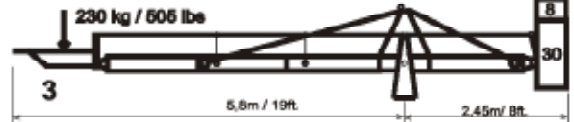
max. Height/Höhe:  
3,7m(12ft.)



max. Height/Höhe:  
4,9m(16ft.)



max. Height/Höhe:  
6,1m(20ft.)

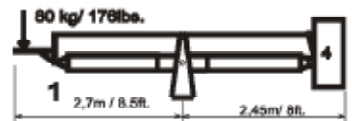


max. Height/Höhe:  
7,3m(24ft.)

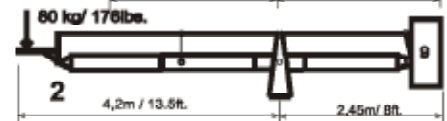


## Remote Versions

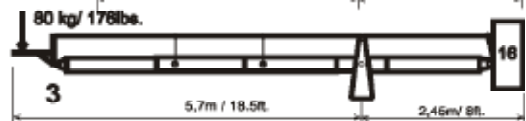
max. Height/Höhe:  
3,7m(12ft.)



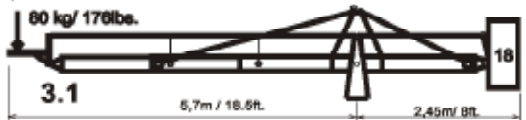
max. Height/Höhe:  
4,9m(16ft.)



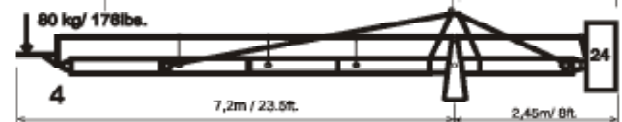
max. Height/Höhe:  
6,1m(20ft.)



max. Height/Höhe:  
6,1m(20ft.)



max. Height/Höhe:  
7,4m(24.3ft.)



max. Height/Höhe:  
8,6m(28.3ft.)



max. Height/Höhe:  
9,8m(32.3ft.)



The measurements and weights may differ up to 2 % due to production tolerances.

Die Maße und Gewichte können aufgrund von