

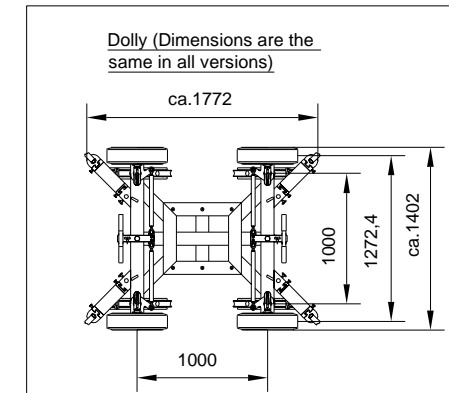
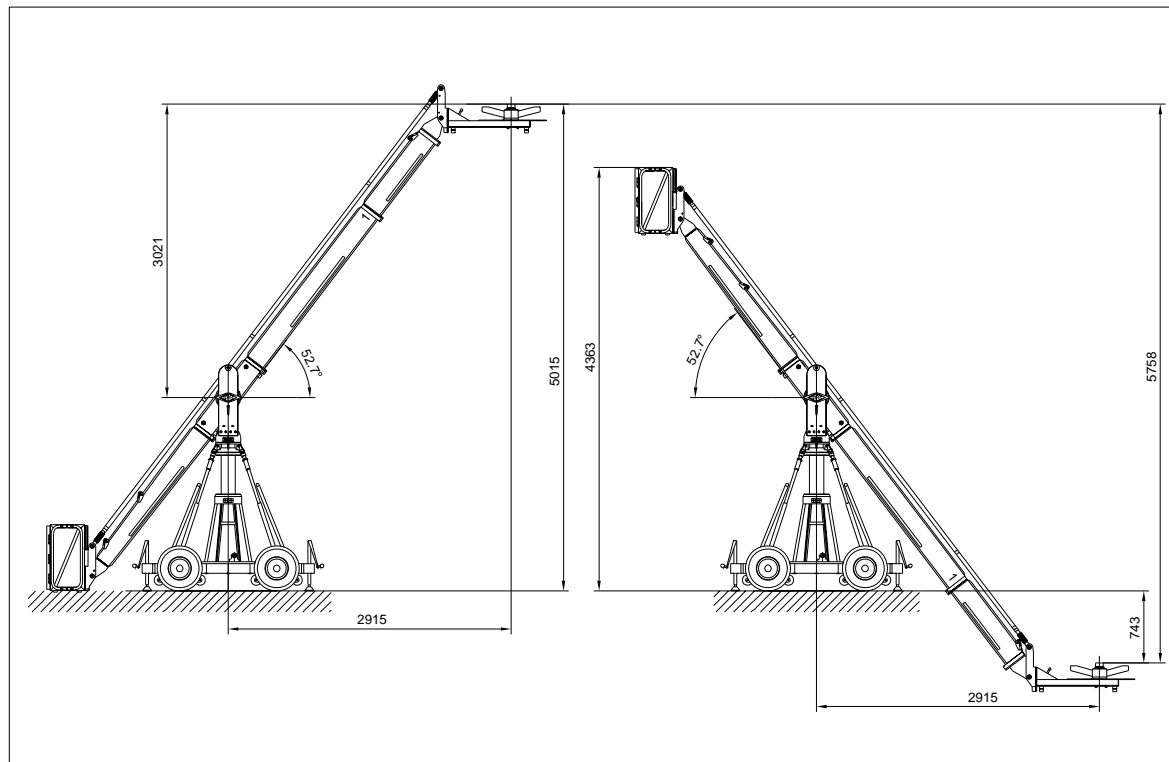
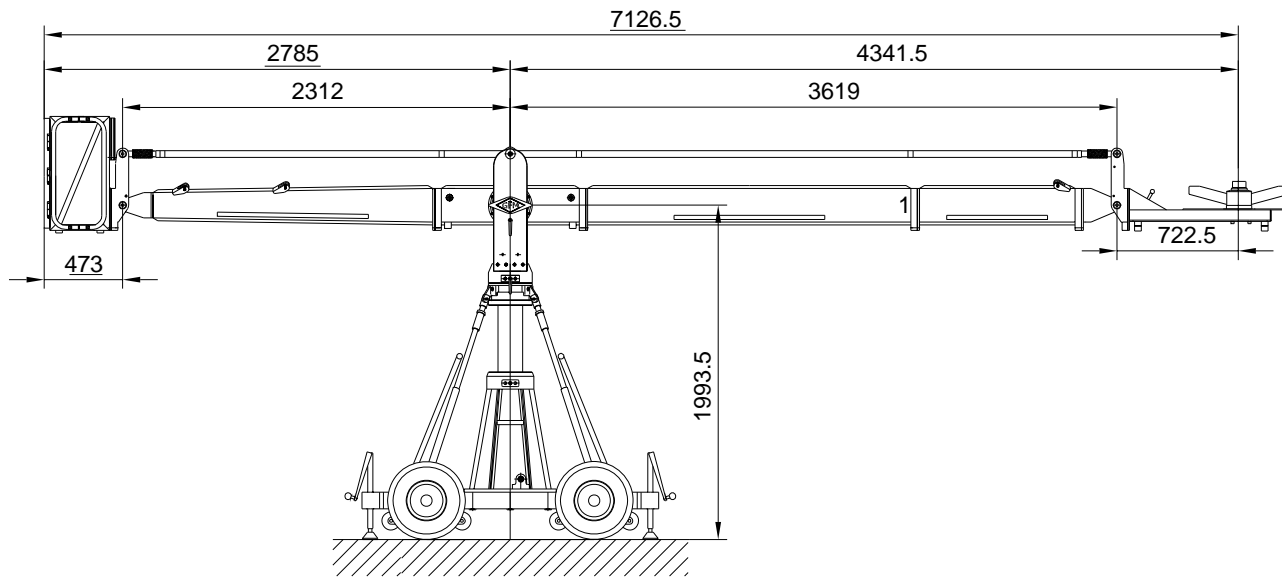
All measurements are = mm

Front extension arms required	1x2000mm	Counterweight required to balance empty arm	1x8kg=8kg
Rear extension arm required	-	Arm reach (pivot to camera head mount)	3363,5mm
Maximum Platform height	1x1920mm	Length of rear end (pivot to outside of bucket)	2785 mm
Max. lift capacity (Working load) (2 pers.+accessories)	4237mm	Pivot point height	1993,5mm
Total lift range	250kg	Transport height of middle section, assembled	2329,5mm
Counterweight required for max.load	4202mm	Transport height of rigging harness assembled	2763,5mm
	19x14kg 1x8kg =274kg	Crane weight (excluding dolly and weights)	417 kg
		Transport weight excluding counterweight	661 kg



GF16-Specifications

Version 1				Patent-Nr.:	D200-V1d
Name	Datum	Index	Datum	Zugehörige Zeichnungs-Nr.:	
Erstellt	Freigelegt	23.05.01	c	22.09.03	--
Geprüft			d	07.03.05	Phat.



All measurements are = mm

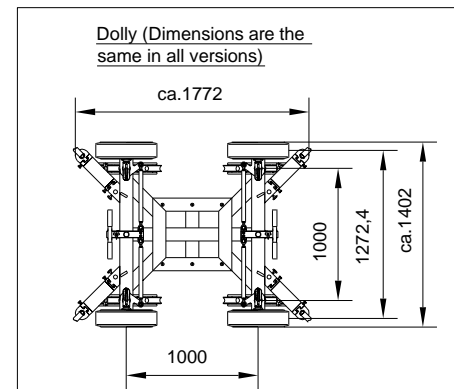
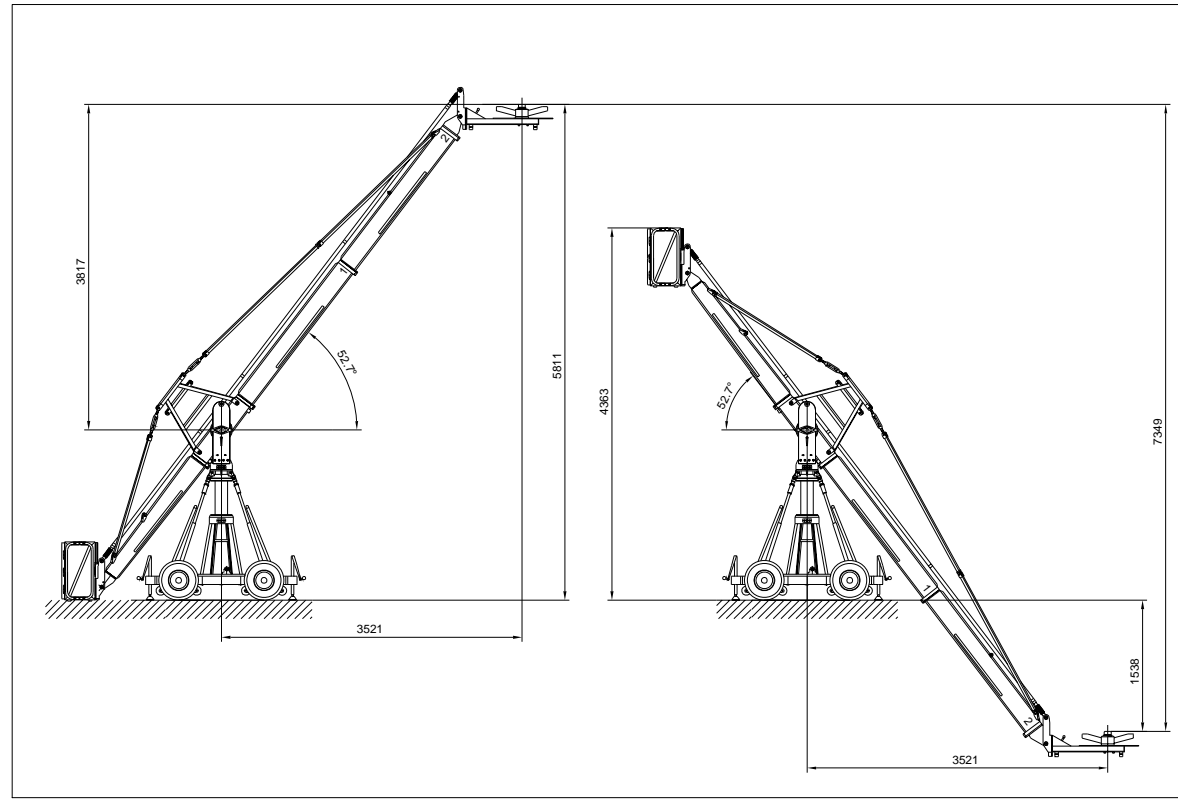
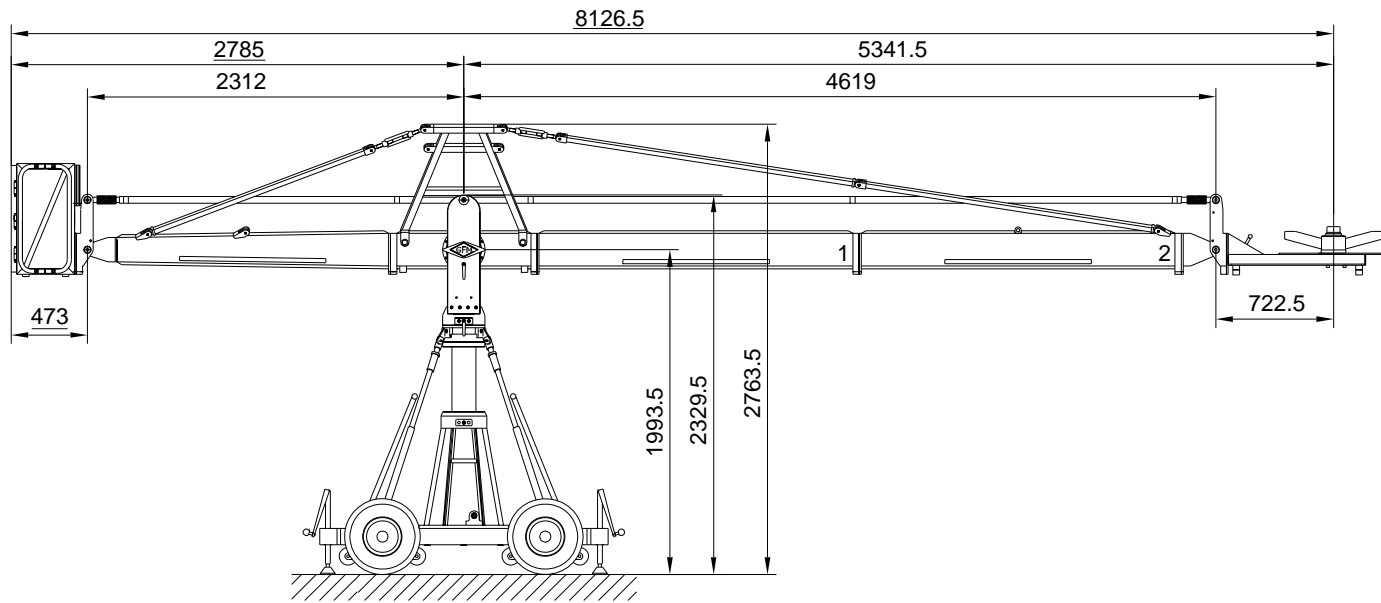
Front extension arms required	1x2000mm 1x1000mm	Counterweight required to balance empty arm	2x14kg 1x8kg=36kg
Rear extension arm required	1x1920mm	Arm reach (pivot to camera head mount)	4341,5mm
Maximum Platform height	5015mm	Length of rear end (pivot to outside of bucket)	2785mm
Max. lift capacity (Working load) (2 pers.+accessories)	250kg	Pivot point height	1993,5mm
Total lift range	5758mm	Transport height of middle section, assembled	2329,5mm
Counterweight required for max.load	30x14kg 1x4kg=424kg	Transport height of rigging harness assembled	2763,5mm
		Crane weight (excluding dolly and weights)	434 kg
		Transport weight excluding counterweight	678 kg



GF 16 - Specifications

Version 2 Datenblatt-Nr.: D200-V2d

Erstellt	Freigelegt	Datum	Index	Datum	Zugehörige Zeichnungs-Nr.:
		02.05.01	c	22.09.03	
Geprüft			d	07.03.05	Platz:



All measurements are = mm

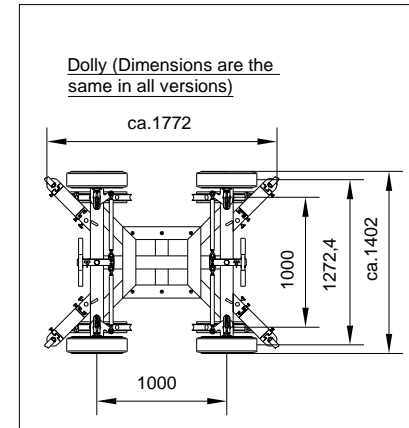
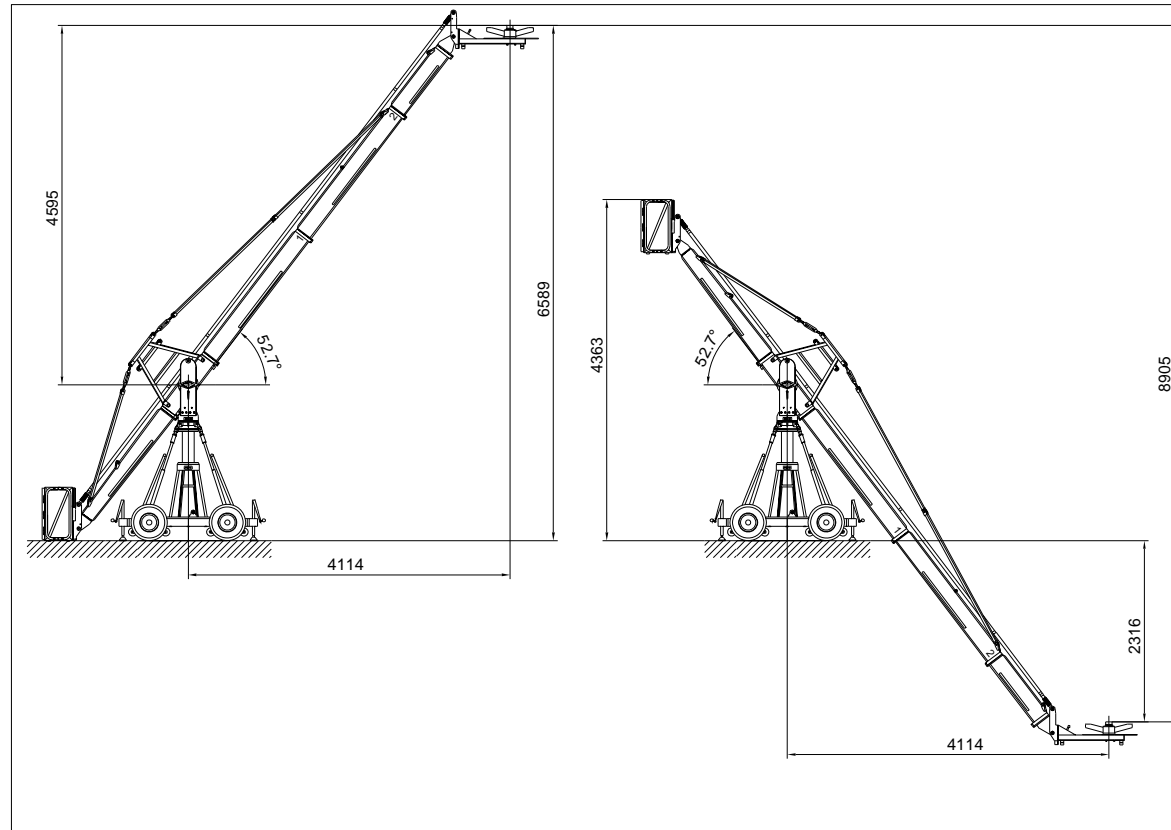
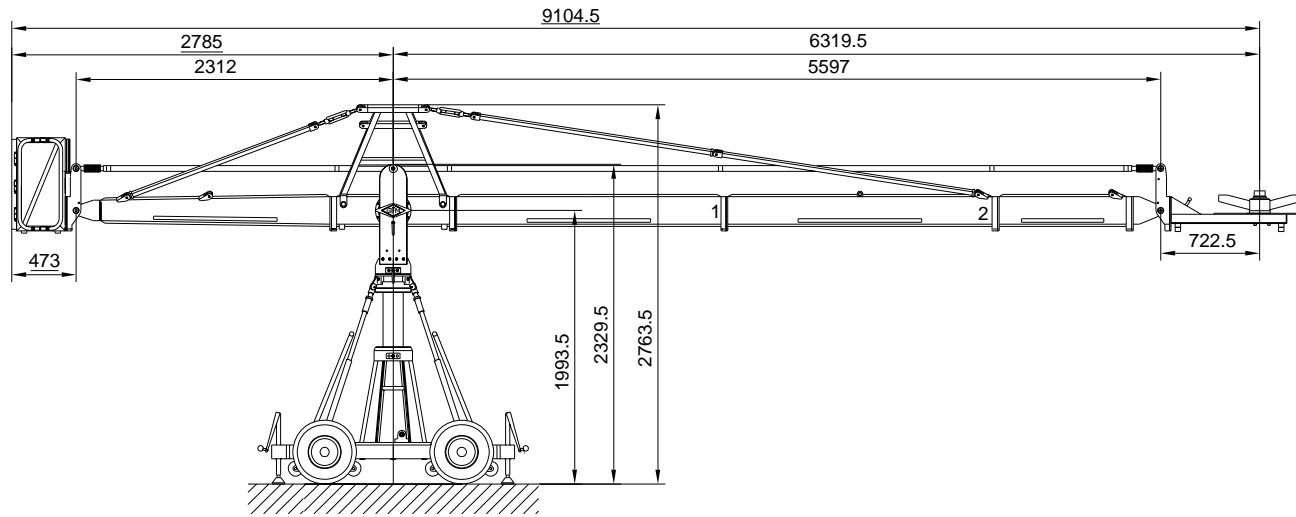
Front extension arms required	2x2000mm	Counterweight required to balance empty arm	4x14kg=56kg
Rear extension arm required	1x1920mm	Arm reach (pivot to camera head mount)	5341,5mm
Maximum Platform height	5811mm	Length of rear end (pivot to outside of bucket)	2785mm
Max. lift capacity (Working load) (2 pers.+accessories)	250kg	Pivot point height	1993,5mm
Total lift range	7349mm	Transport height of middle section, assembled	2329,5mm
Counterweight required for max.load	39x14kg 1x8kg=554kg	Transport height of rigging harness assembled	2763,5mm
		Crane weight (excluding dolly and weights)	486 kg
		Transport weight excluding counterweight	730 kg



GF 16 - Specifications

Version 3 Datenblatt-Nr.: D200-V3e

Erstellt	Tramaly	Datum	02.05.01	Index	1	Datum	22.09.03	Zugehörige Zeichnungs-Nr.	--
Geprüft		Datum		Index		Datum	07.03.05	Platz	



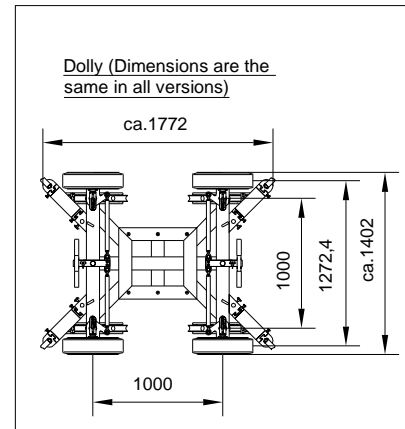
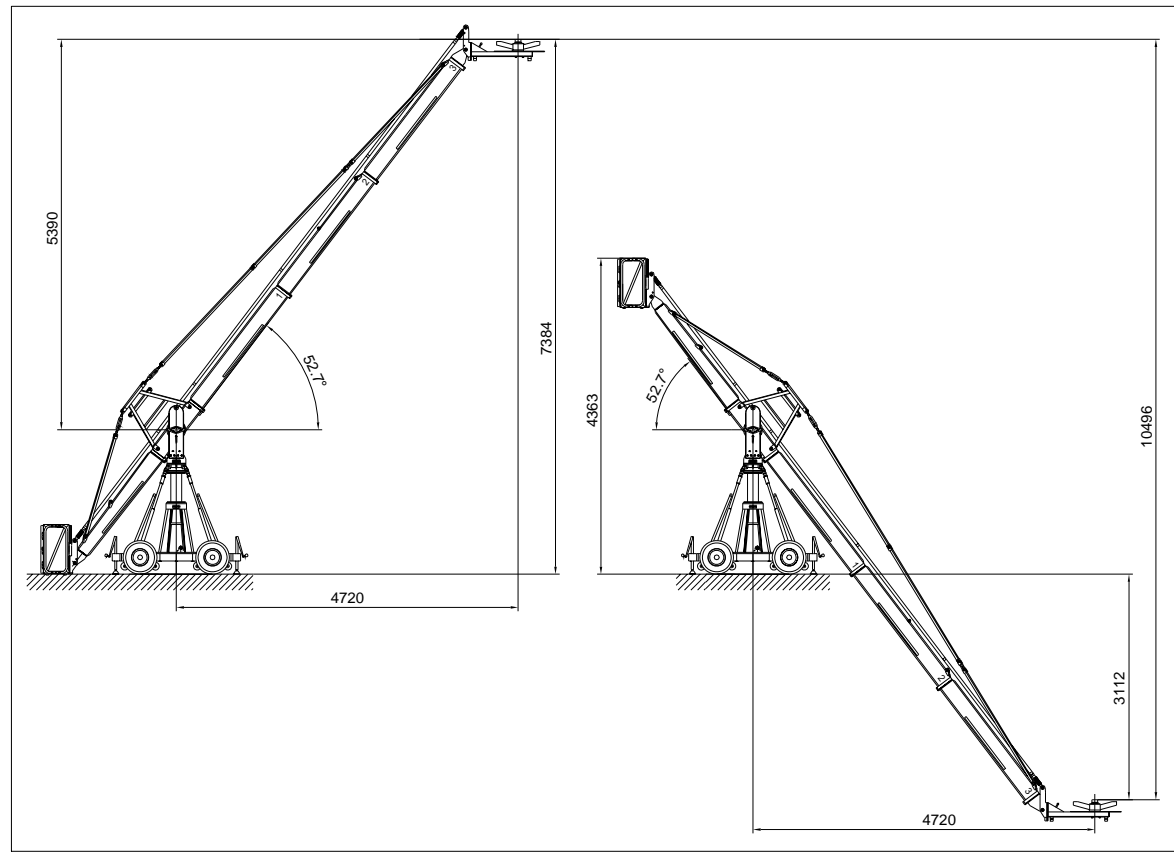
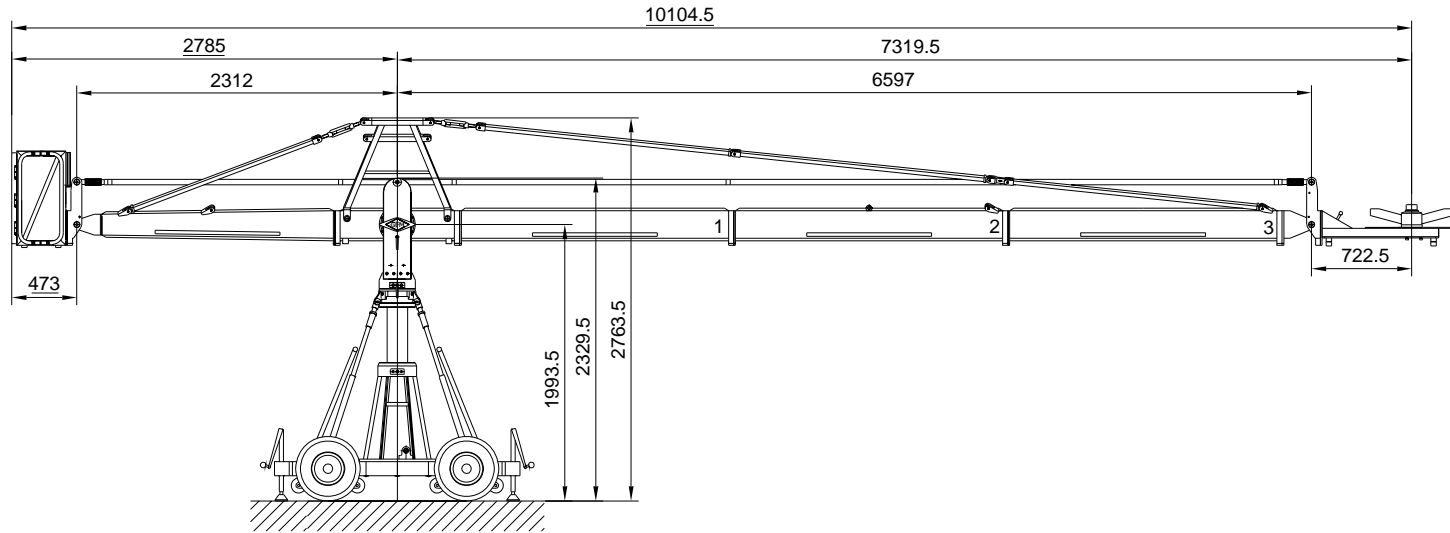
All measurements are = mm

Front extension arms required	2x2000mm 1x1000mm	Counterweight required to balance empty arm	8x14kg=112kg
Rear extension arm required	1x1920mm	Arm reach (pivot to camera head mount)	6319,5mm
Maximum Platform height	6589mm	Length of rear end (pivot to outside of bucket)	2785mm
Max. lift capacity (Working load) (2 pers.+accessories)	250kg	Pivot point height	1993,5mm
Total lift range	8905mm	Transport height of middle section, assembled	2329,5mm
Counterweight required for max.load	51x14kg 1x4kg=718kg	Transport height of rigging harness assembled	2763,5mm
		Crane weight (excluding dolly and weights)	506 kg
		Transport weight excluding counterweight	750 kg



GF 16 - Specifications

Version 4				Datenblatt-Nr.: D200-V4e	
Erstellt	Freigelegt	Datum	Index	Datum	Zugehörige Zeichnungs-Nr.:
		02.05.01	1	22.09.03	..
Geprüft			2	07.03.05	Plat:



All measurements are = mm

Front extension arms required	3x2000mm	Counterweight required to balance empty arm	13x14kg =182kg
	-	Arm reach (pivot to camera head mount)	7319,5mm
Rear extension arm required	1x1920mm	Length of rear end (pivot to outside of bucket)	2785mm
Maximum Platform height	7384mm	Pivot point height	1993,5mm
Max. lift capacity (Working load) (2 pers.+accessories)	250kg	Transport height of middle section, assembled	2329,5mm
Total lift range	10495mm	Transport height of rigging harness assembled	2763,5mm
Counterweight required for max.load	64x14kg =896kg	Crane weight (excluding dolly and weights)	525 kg
		Transport weight excluding counterweight	769 kg

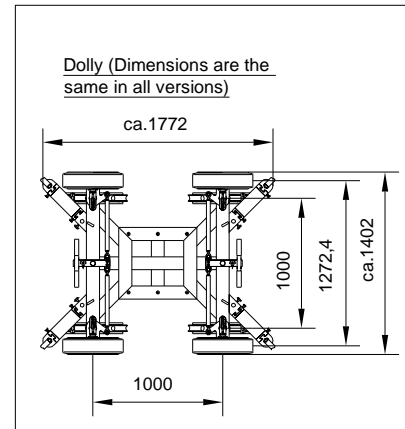
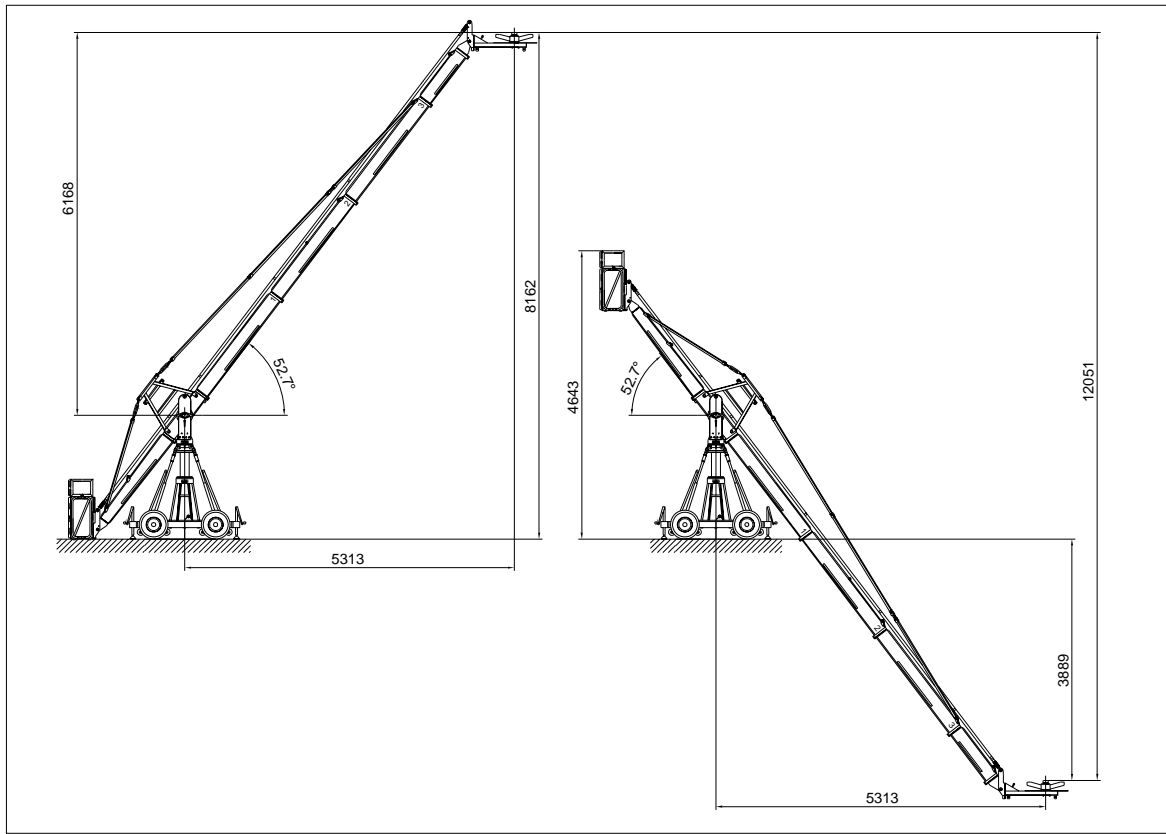
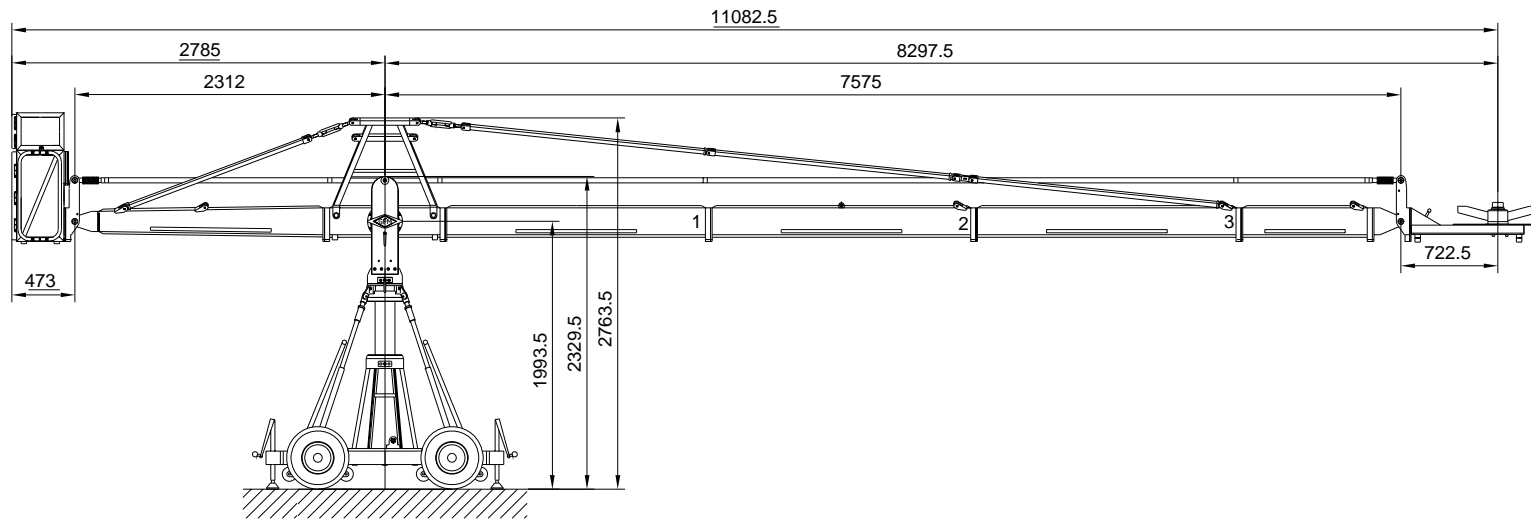


GF 16 - Specifications

Version 5

Datenblatt-Nr.: D200-V5e

Erstellt	Freigelegt	Datum	Index	Datum	Zugehörige Zeichnungs-Nr.
		02.05.01	1	22.09.03	..
			2	07.03.05	



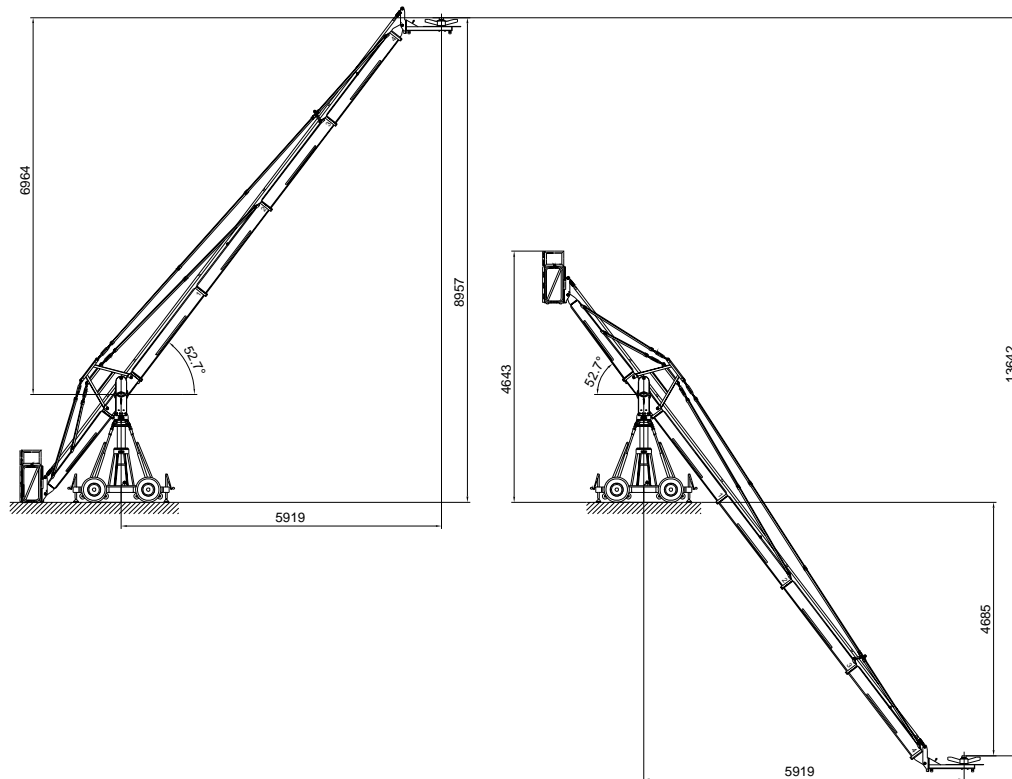
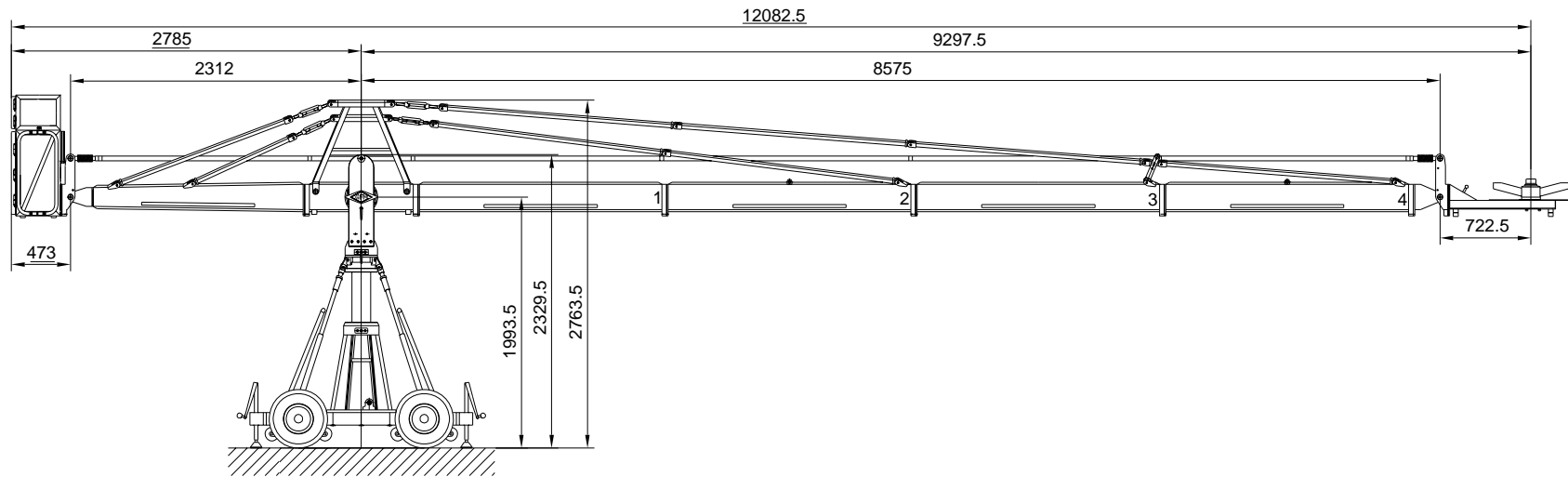
All measurements are = mm

Front extension arms required	3x2000mm 1x1000mm	Counterweight required to balance empty arm	19x14kg =266kg
Rear extension arm required	1x1920mm	Arm reach (pivot to camera head mount)	8297.5
Maximum Platform height	8162mm	Length of rear end (pivot to outside of bucket)	2785 mm
Max. lift capacity (Working load) (2 pers.+accessories)	250kg	Pivot point height	1993,5mm
Total lift range	12051mm	Transport height of middle section, assembled	2329,5mm
Counterweight required for max.load	77x14kg =1078kg	Transport height of rigging harness assembled	2763,5mm
		Crane weight (excluding dolly and weights)	562 kg
		Transport weight excluding counterweight	806 kg

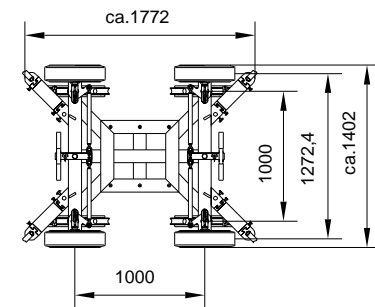


GF 16 - Specifications

Version 6				Datenblatt-Nr.: D200-V6e	
Erstellt	Freigelegt	Datum	Index	Datum	Zugehörige Zeichnungs-Nr.:
		02.05.01	01	22.09.03	..
Geprüft			07.03.05		



Dolly (Dimensions are the same in all versions)



All measurements are = mm

Front extension arms required	4x2000mm	Counterweight required to balance empty arm	26x14kg 1x8kg=372kg
Rear extension arm required	1x1920mm	Arm reach (pivot to camera head mount)	9297,5mm
Maximum Platform height	8957mm	Length of rear end (pivot to outside of bucket)	2785mm
Max. lift capacity (Working load) (2 pers.+accessories)	250kg	Pivot point height	1993,5mm
Total lift range	13642mm	Transport height of middle section, assembled	2329,5mm
Counterweight required for max.load	91x14kg =1274kg	Transport height of rigging harness assembled	2763,5mm
		Crane weight (excluding dolly and weights)	597 kg
		Transport weight excluding counterweight	841 kg

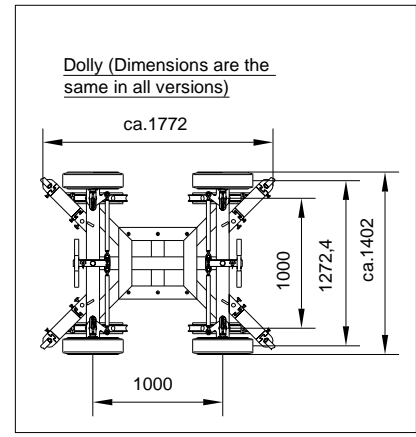
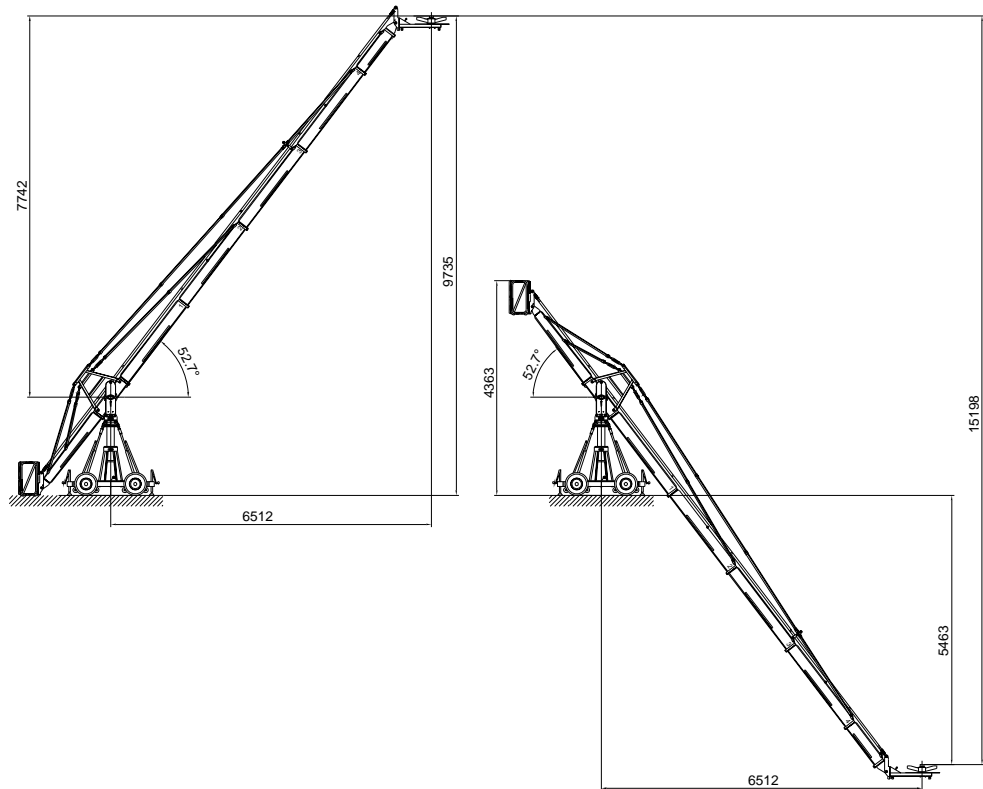
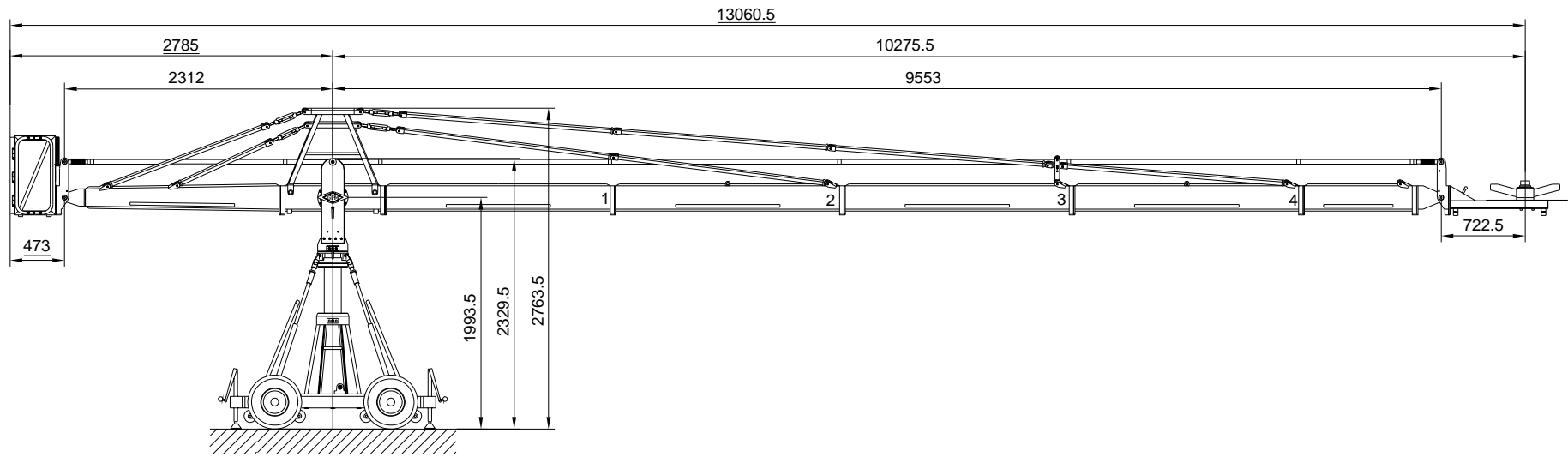


GF 16 - Specifications

Version 7

Datenblatt-Nr.: D200-V7d

Erstellt	Freigelegt	Datum	Index	Datum	Zugehörige Zeichnungs-Nr.
		02.05.01	e	22.09.03	..
Geprüft			d	07.03.05	Plat.



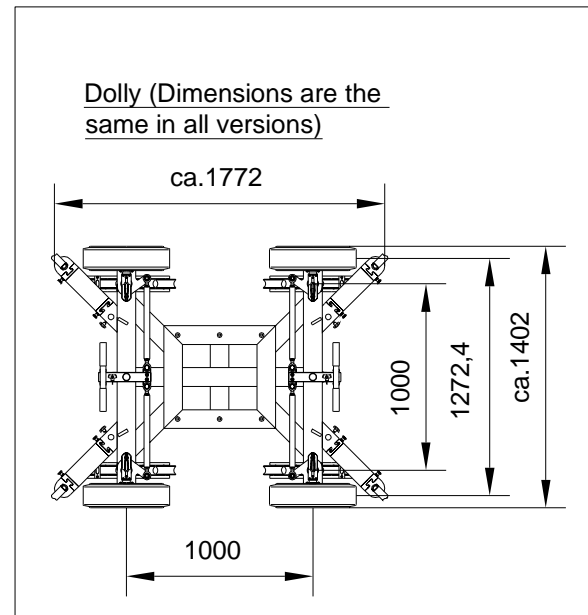
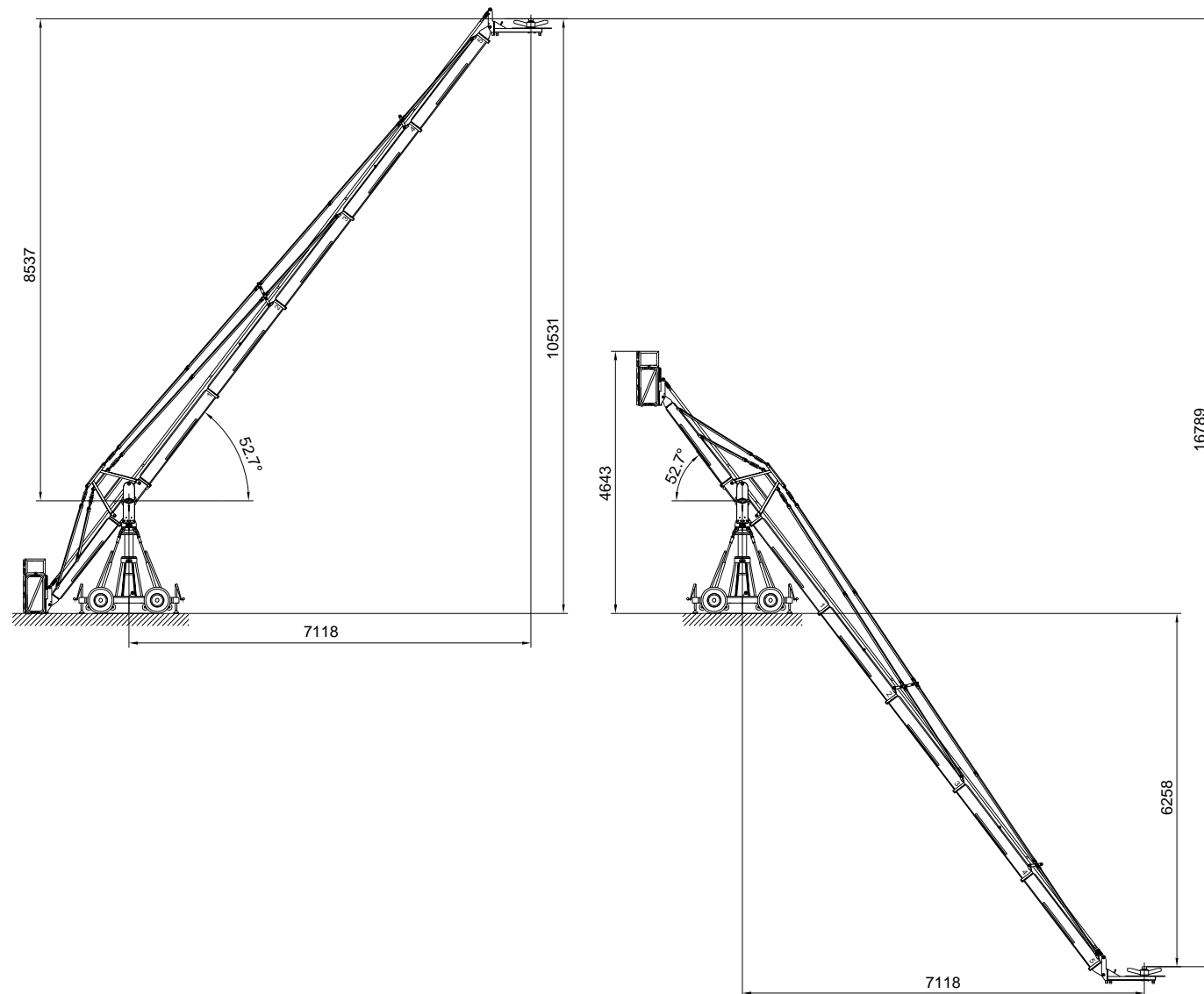
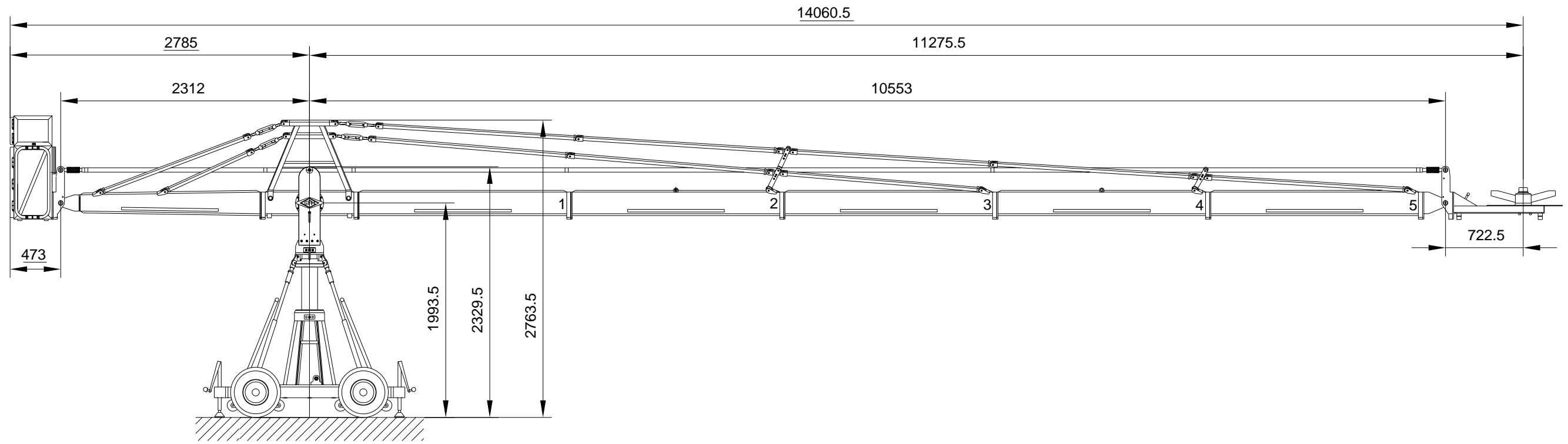
All measurements are = mm

Front extension arms required	4x2000mm	Counterweight required to balance empty arm	32x14kg =448kg
	1x1000mm	Arm reach (pivot to camera head mount)	10275,5mm
Rear extension arm required	1x1920mm	Length of rear end (pivot to outside of bucket)	2785mm
Maximum Platform height	9735mm	Pivot point height	1993,5mm
Max. lift capacity (Working load) (2 pers.+accessories)	140kg	Transport height of middle section, assembled	2329,5mm
Total lift range	15198mm	Transport height of rigging harness assembled	2763,5mm
Counterweight required for max.load	73x14kg	Crane weight (excluding dolly and weights)	594 kg
	=1022kg	Transport weight excluding counterweight	838 kg



GF 16 - Specifications

Version 8				Datenblatt-Nr.: D200-V8d	
Erstellt	Freigelegt	Datum	Index	Datum	Zugehörige Zeichnungs-Nr.:
		02.05.01	c	22.09.03	..
Geprüft			d	07.03.05	Platz:



All measurements are = mm

Front extension arms required	5x2000mm	Counterweight required to balance empty arm	39x14kg 1x8kg=554kg
Rear extension arm required	-	Arm reach (pivot to camera head mount)	11275,5mm
Maximum Platform height	1x1920mm	Length of rear end (pivot to outside of bucket)	2785mm
Max. lift capacity (Working load) (2 pers.+accessories)	140kg	Pivot point height	1993,5mm
Total lift range	16789mm	Transport height of middle section,assembled	2329,5mm
Counterweight required for max.load	83x14kg 1x4kg=1166kg	Transport height of rigging harness assembled	2763,5mm
		Crane weight (excluding dolly and weights)	632 kg
		Transport weight excluding counterweight	876 kg

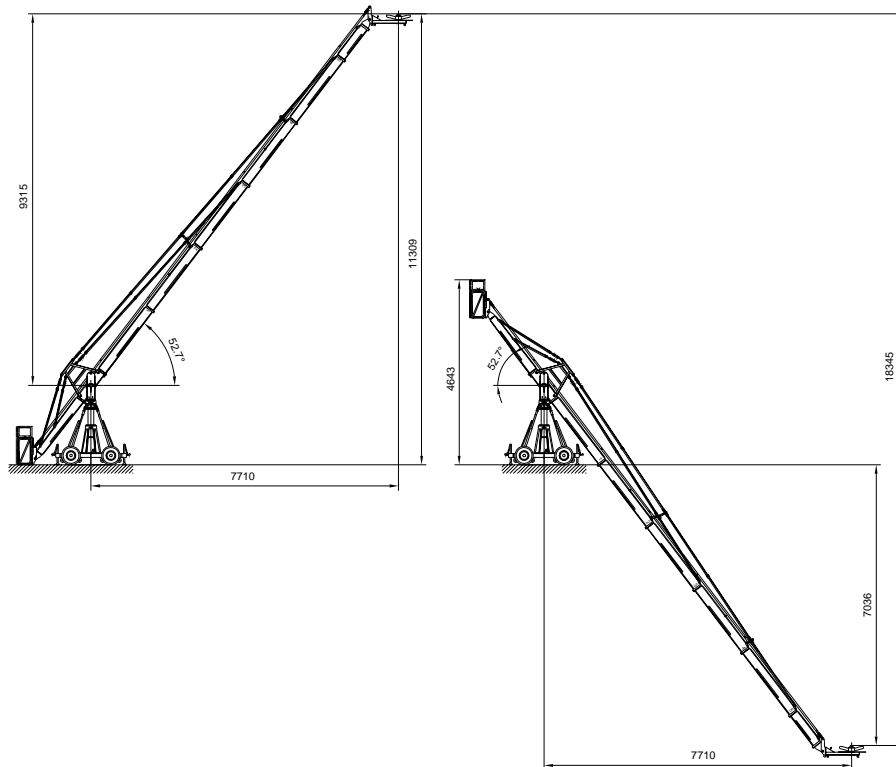
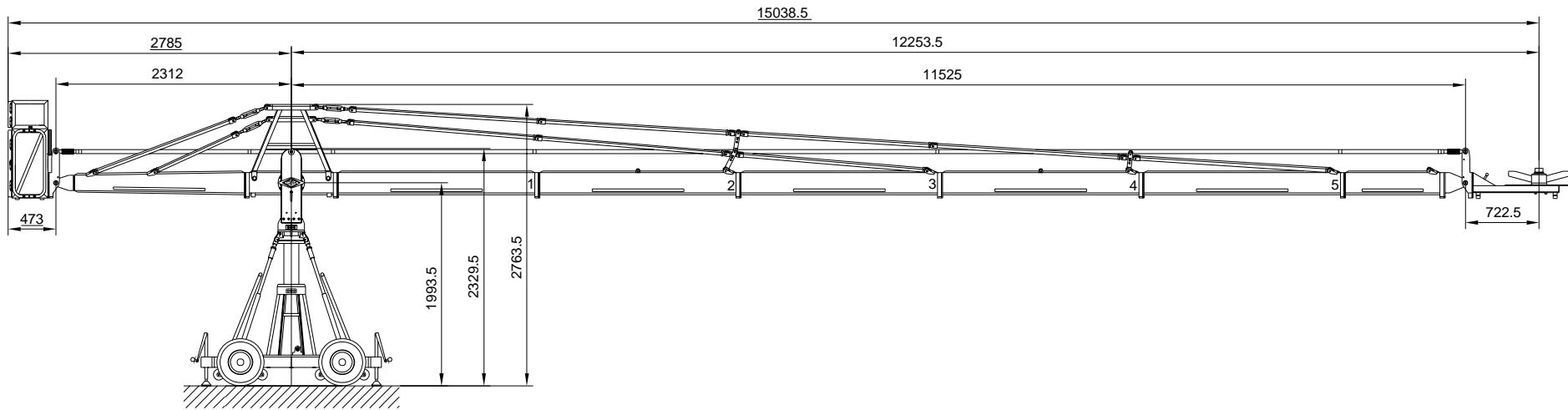


GF 16 - Specifications

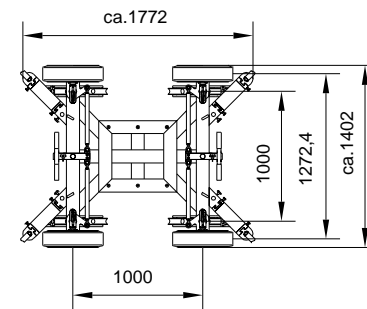
Version 9

Datenblatt- Nr.: D200-V9d

Name	Datum	Index	Datum	Zugehörige Zeichnungs-Nr.:
Erstellt Trautwig	02.05.01	c	16.10.02	--
Geprüft		d	07.03.05	Plad:



Dolly (Dimensions are the same in all versions)



All measurements are = mm

Front extension arms required	4x2000mm	Counterweight required to balance empty arm	47x14kg =658kg
	1x1000mm	Arm reach (pivot to camera head mount)	12253,5mm
Rear extension arm required	1x1920mm	Length of rear end (pivot to outside of bucket)	2785mm
Maximum platform height	11309mm	Pivot point height	1993,5mm
Max. lift capacity (Working load) (2 pers.+accessories)	130kg	Transport height of middle section, assembled	2329,5mm
Total lift range	18345mm	Transport height of rigging harness assembled	2763,5mm
Counterweight required for max.load	95x14kg	Crane weight (excluding dolly and weights)	652 kg
	=1330kg	Transport weight excluding counterweight	896 kg

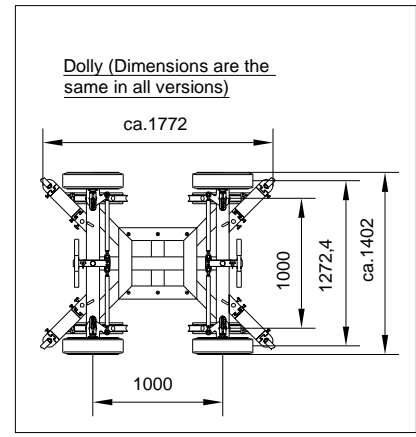
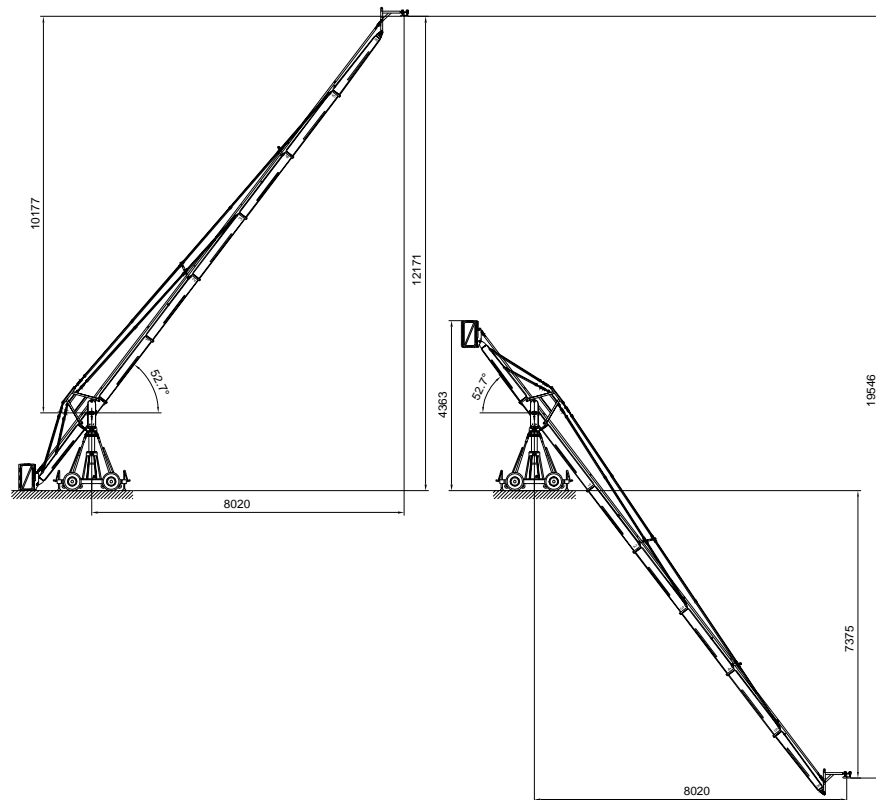
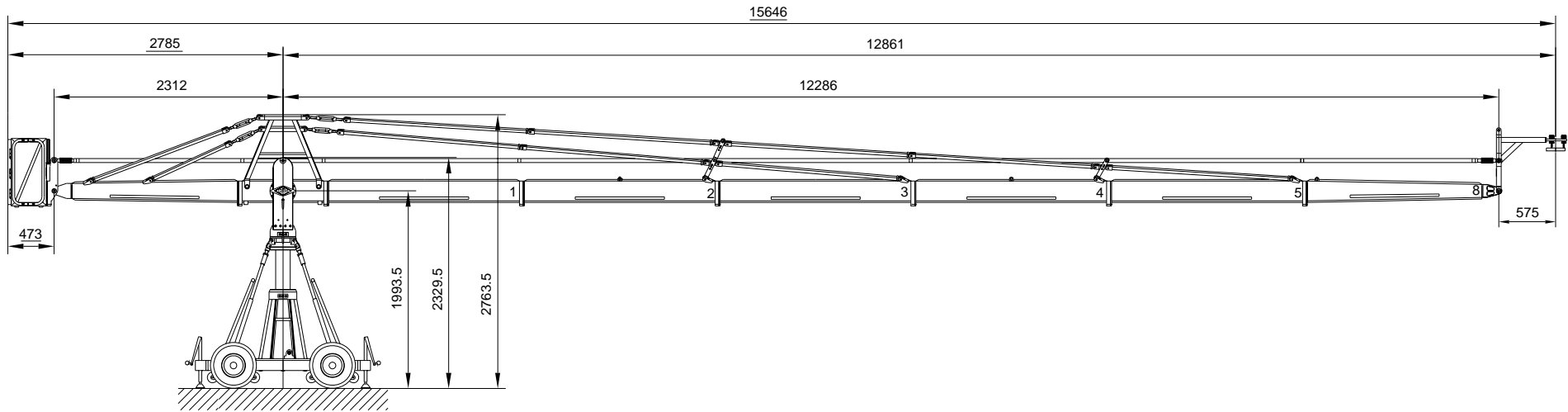


GF 16 - Specifications

Version 10

Datenblatt-Nr.: D200-V10d

Erstellt	Name	Datum	Index	Datum	Zugehörige Zeichnungs-Nr.
Trunkley		02.05.01	c	22.09.03	--
Geipert			d	07.03.05	Plat:



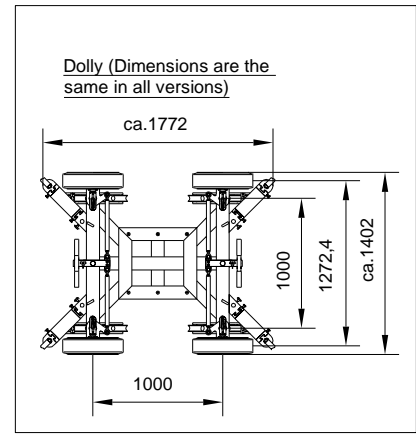
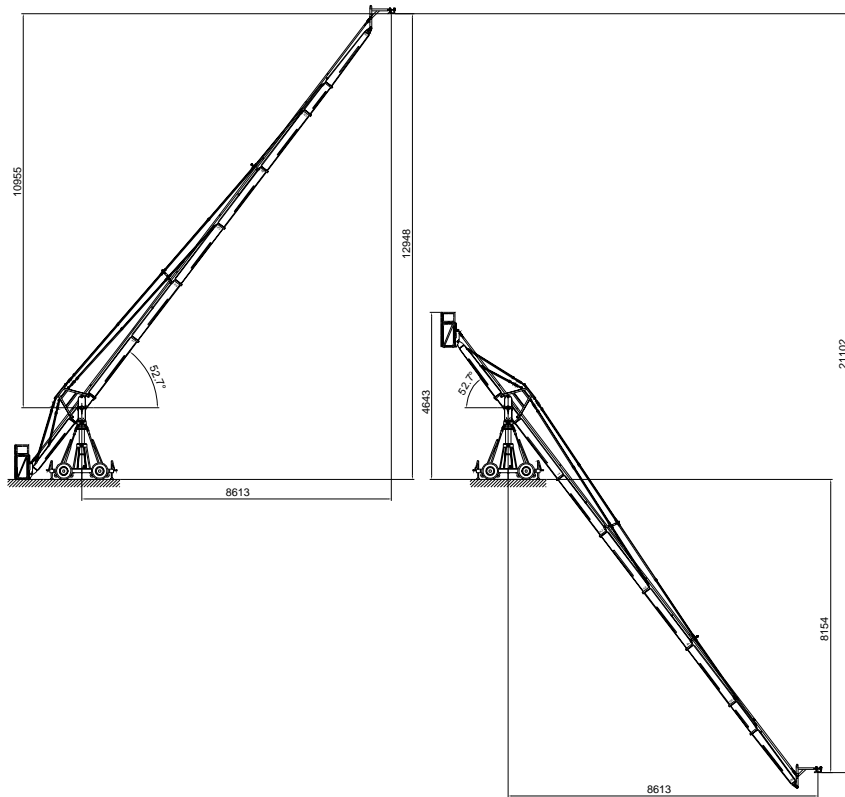
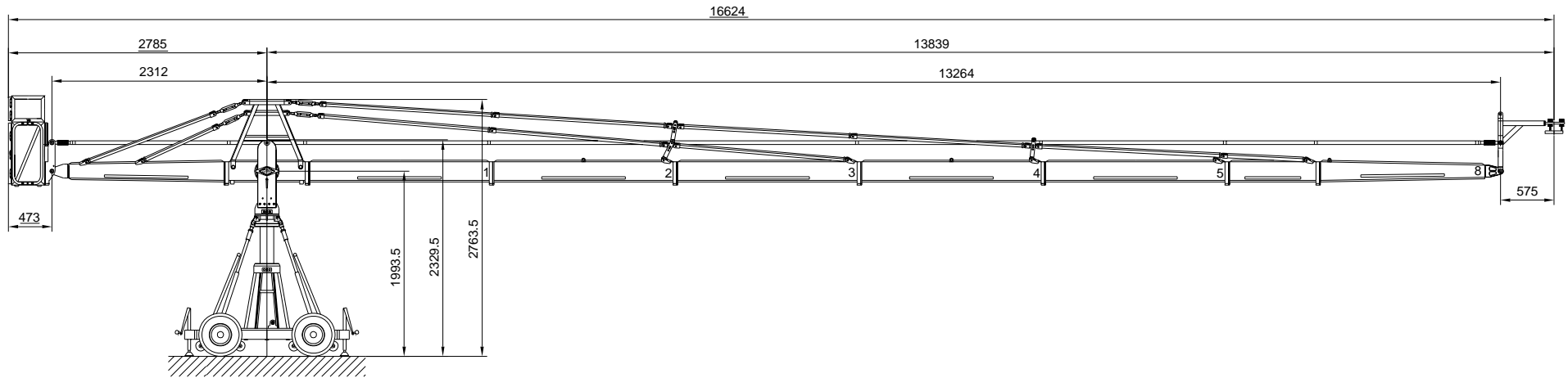
All measurements are = mm

Front extension arms required	5x2000mm	Counterweight required to balance empty arm	37x14kg
	2m conecal		=518kg
Rear extension arm required	1x1920mm	Arm reach (pivot to camera head mount)	12861mm
		Length of rear end (pivot to outside of weight bucket)	2785mm
Maximum remote head and camera height	12171mm	Pivot point height	1993,5mm
Max. lift capacity(Working load) (remote head + camera)	85kg	Transport height of middle section,assembled	2329,5mm
Total lift range	19546mm	Transport height of rigging harness assembled	2763,5mm
Counterweight required for max.load	69x14kg	Crane weight (excluding dolly and weights)	602 kg
	1x8=974kg	Transport weight excluding counterweight	846 kg



GF 16 - Specifications

Version 11				Datenblatt-Nr.: D200-V11d	
Name	Status	Index	Datum	Zugehörige Zeichnungs-Nr.:	
Erstellt	Freigelegt	02.05.01	07.03.05	--	
Geprüft					



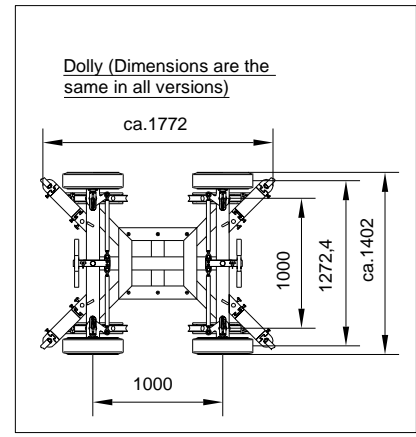
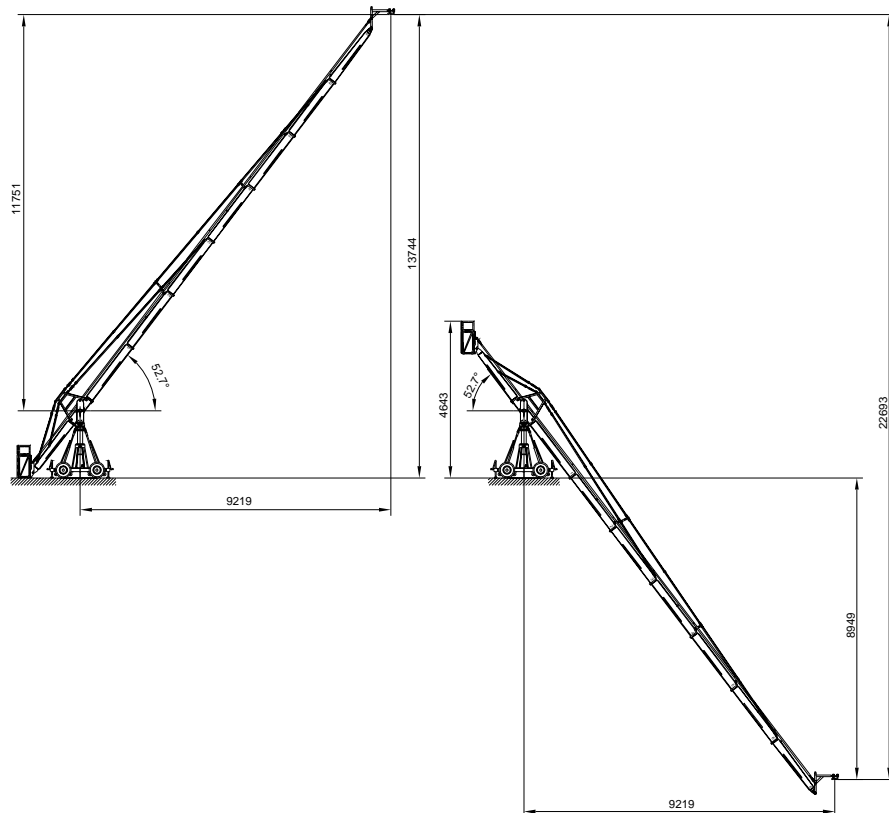
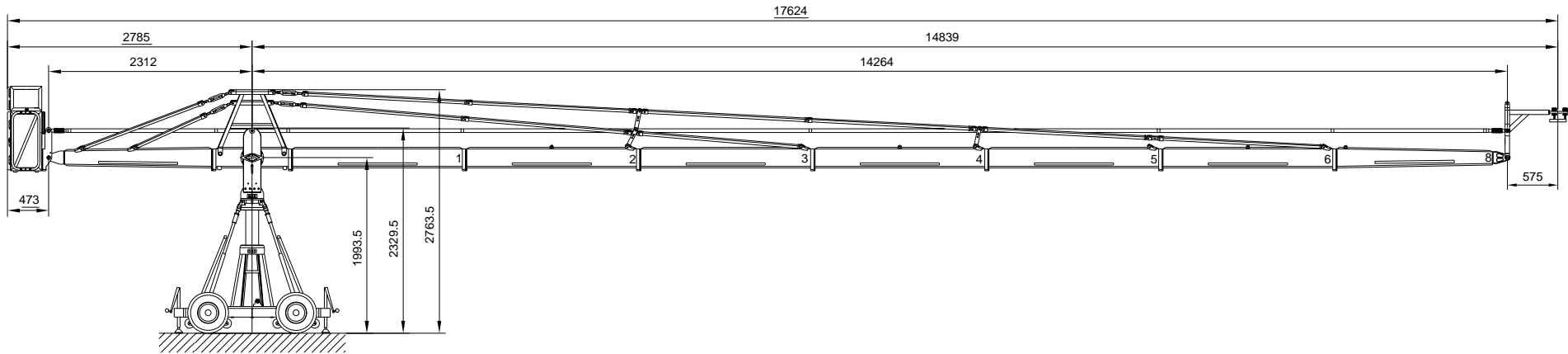
All measurements are = mm

Front extension arms required	5x2000mm	Counterweight required to balance empty arm	50x14kg
	1x1000mm		=700kg
Rear extension arm required	2m conecal	Arm reach (pivot to camera head mount)	13839mm
	1x1920mm	Length of rear end (pivot to outside of bucket)	2785mm
Maximum remote head and camera height	12948mm	Pivot point height	1993,5mm
Max. lift capacity(Working load) (remote head + camera)	85kg	Transport height of middle section, assembled	2329,5mm
Total lift range	21102mm	Transport height of rigging harness assembled	2763,5mm
Counterweight required for max.load	81x14kg	Crane weight (excluding dolly and weights)	638 kg
	=1134kg	Transport weight excluding counterweight	882 kg



GF 16 - Specifications

Version 12		Datenblatt-Nr.: D200-V12d	
Name	Datum	Index	Datum
Erstellt	02.05.01	c	22.09.03
Geprüft		g	07.03.05
Zugehörige Zeichnungs-Nr.:		--	



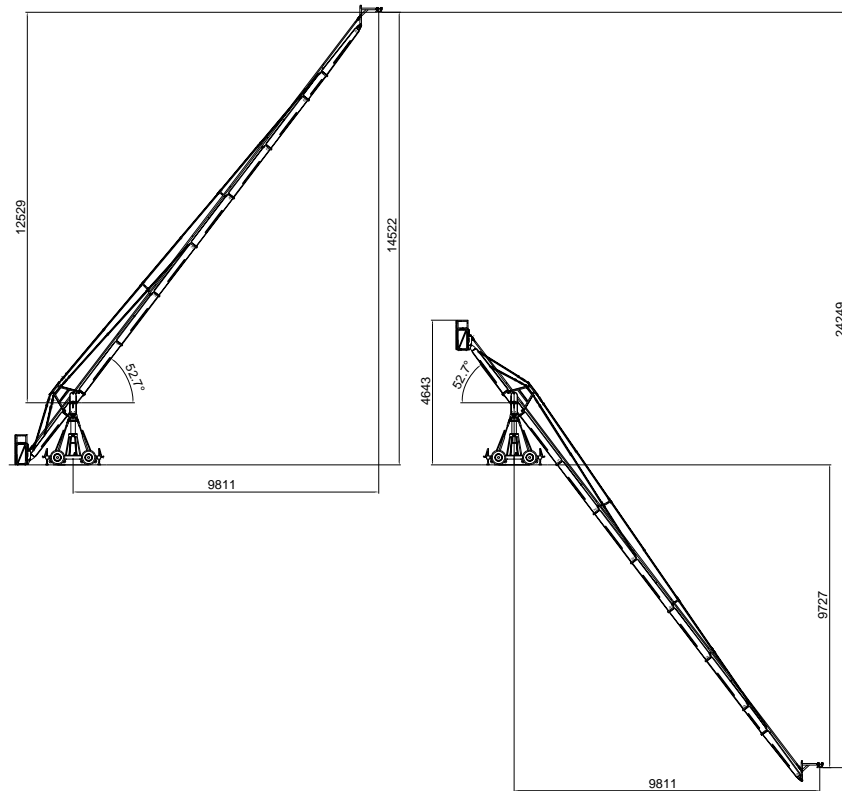
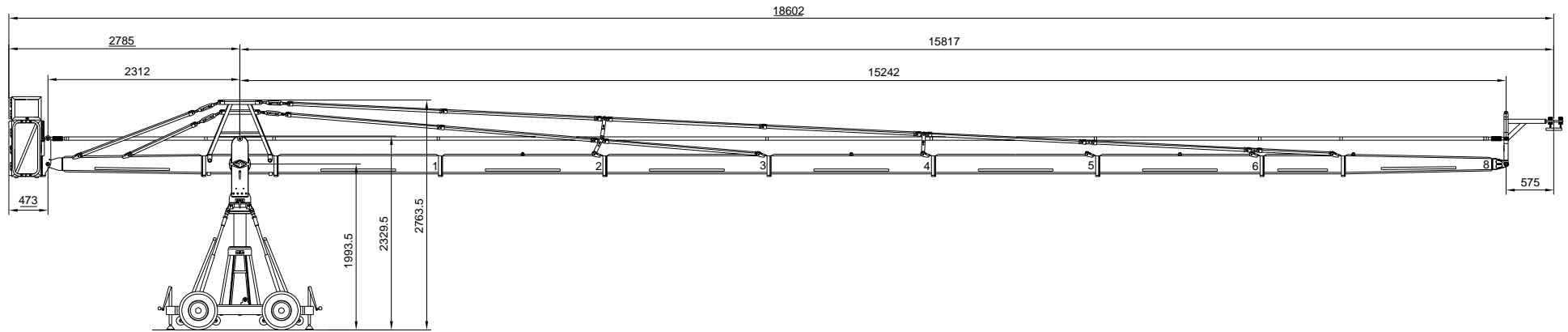
All measurements are = mm

Front extension arms required	6x2000mm	Counterweight required to balance empty arm	51x14kg
	2m conecal	Arm reach (pivot to camera head mount)	1x8kg=722kg
Rear extension arm required	1x1920mm	Length of rear end (pivot to outside of bucket)	14839mm
Maximum remote head and camera height	13744mm	Pivot point height	1993,5mm
Max. lift capacity(Working load) (remote head +camera)	80kg	Transport height of middle section,assembled	2329,5mm
Total lift range	22693mm	Transport height of rigging harness assembled	2763,5mm
Counterweight required for max.load	87x14kg	Crane weight (excluding dolly and weights)	651 kg
	=1218kg	Transport weight excluding counterweight	895 kg

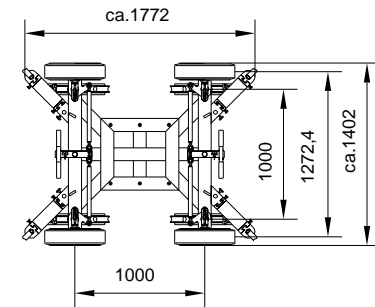


GF 16 - Specifications

Version 13				Datenblatt-Nr.: D200-V13d	
Name	Datum	Index	Datum	Zugehörige Zeichnungs-Nr.:	
Erstellt	02.05.01	c	22.09.03	--	
Geprüft		g	07.03.05	Plat:	



Dolly (Dimensions are the same in all versions)



All measurements are = mm

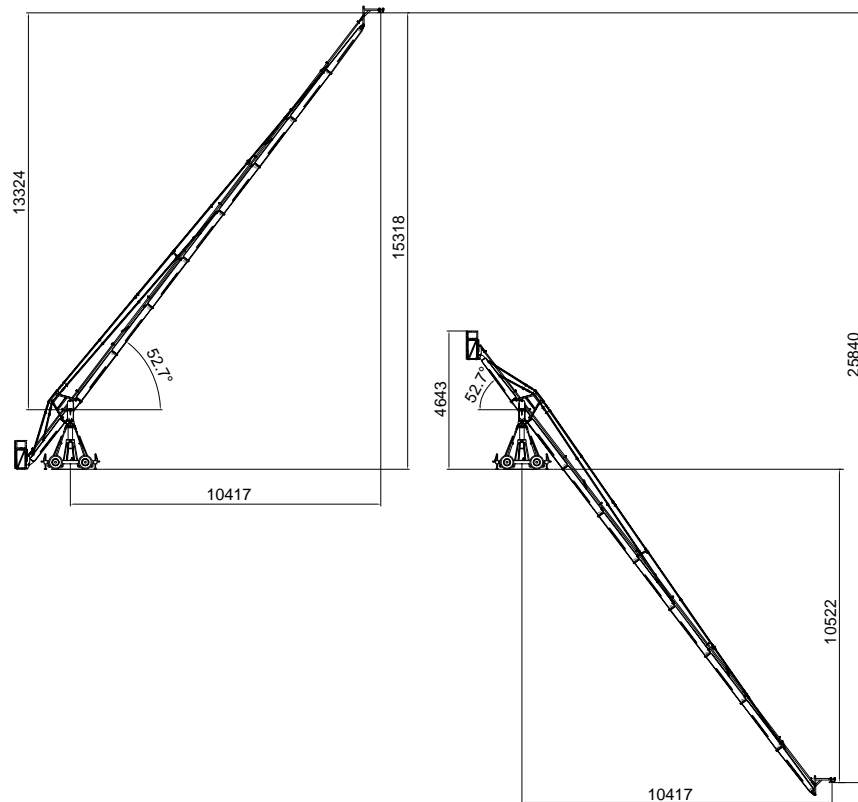
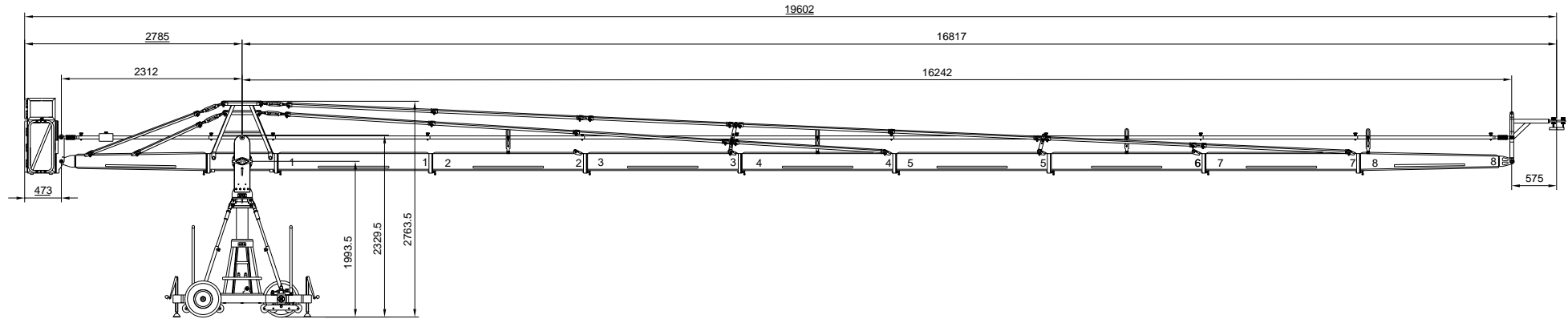
Front extension arms required	6x2000mm	Counterweight required to balance empty arm	61x14kg
	1x1000mm		=854kg
Rear extension arm required	2m conecal	Arm reach (pivot to camera head mount)	15817mm
	1x1920mm	Length of rear end (pivot to outside of bucket)	2785mm
Maximum remote head and camera height	14522mm	Pivot point height	1993,5mm
Max. lift capacity(Working load) (remote head + camera)	80kg	Transport height of middle section, assembled	2329,5mm
Total lift range	24249mm	Transport height of rigging harness assembled	2763,5mm
Counterweight required for max.load	99x14kg	Crane weight (excluding dolly and weights)	672 kg
	1x8kg=1394kg	Transport weight excluding counterweight	916 kg



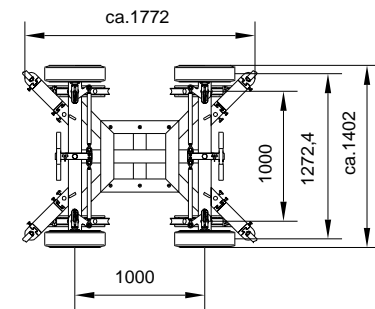
GF 16 - Specifications

Version 14 Datenblatt-Nr.: D200-V14e

Erstellt	Freigelegt	Datum	Index	Datum	Zugehörige Zeichnungs-Nr.
		02.05.01	d	02.11.04	--
			e	07.03.05	



Dolly (Dimensions are the same in all versions)



All measurements are = mm

Front extension arms required	7x2000mm 2m conecal	Counterweight required to balance empty arm	67x14kg =938kg
Rear extension arm required	1x1920mm	Arm reach (pivot to camera head mount)	16817mm
Maximum remote head and camera height	15318mm	Length of rear end (pivot to outside of bucket)	2785mm
Max. lift capacity(Working load) (remote head + camera)	60kg	Pivot point height	1993,5mm
Total lift range	25840mm	Transport height of middle section, assembled	2329,5mm
Counterweight required for max.load	97x14kg 1x4kg=1362kg	Transport height of rigging harness assembled	2763,5mm
		Crane weight (excluding dolly and weights)	683 kg
		Transport weight excluding counterweight	927 kg



GF 16 - Specifications

Version 15 Datenblatt-Nr.: D200-V15f

Name	Datum	Index	Datum	Zugehörige Zeichnungs-Nr.
Erstellt	Trautwein	02.05.01	e	09.08.04
Geprüft		f	07.03.05	